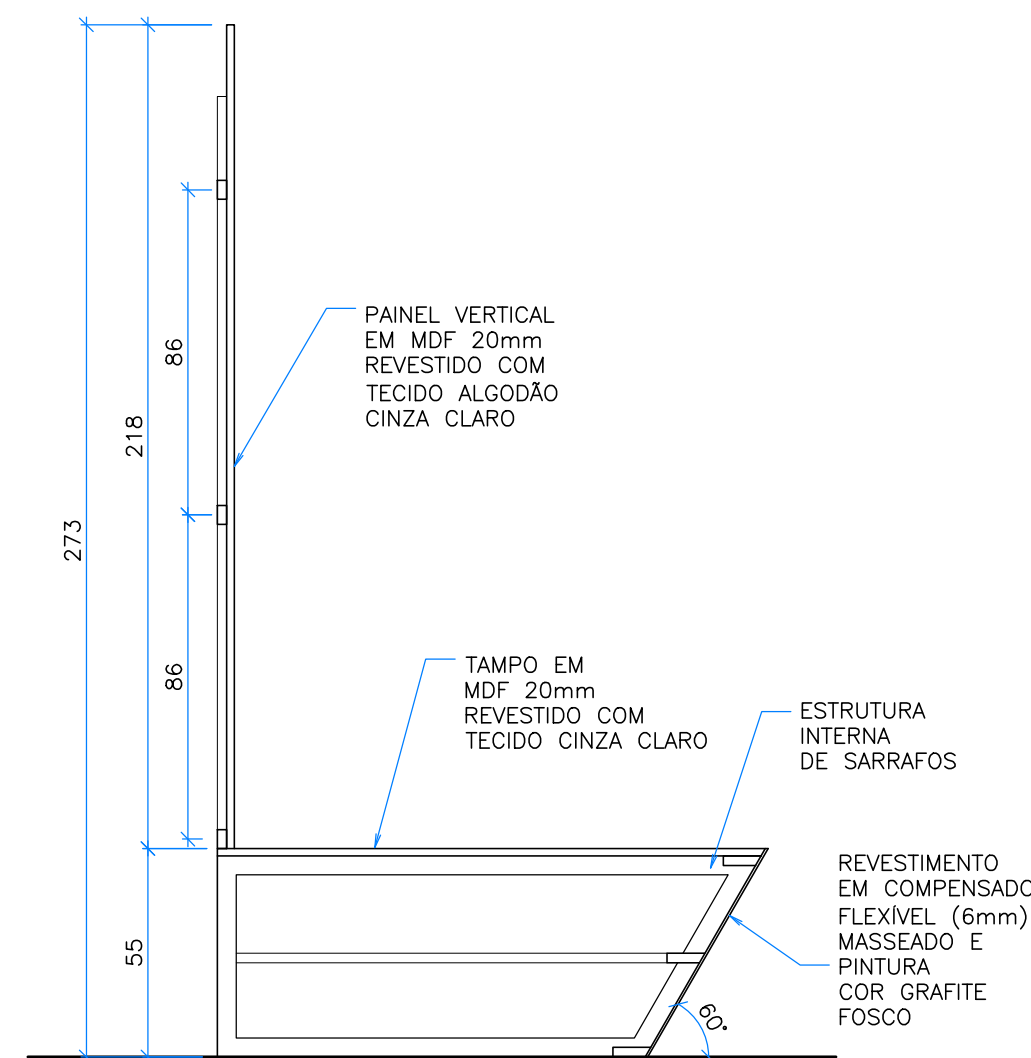
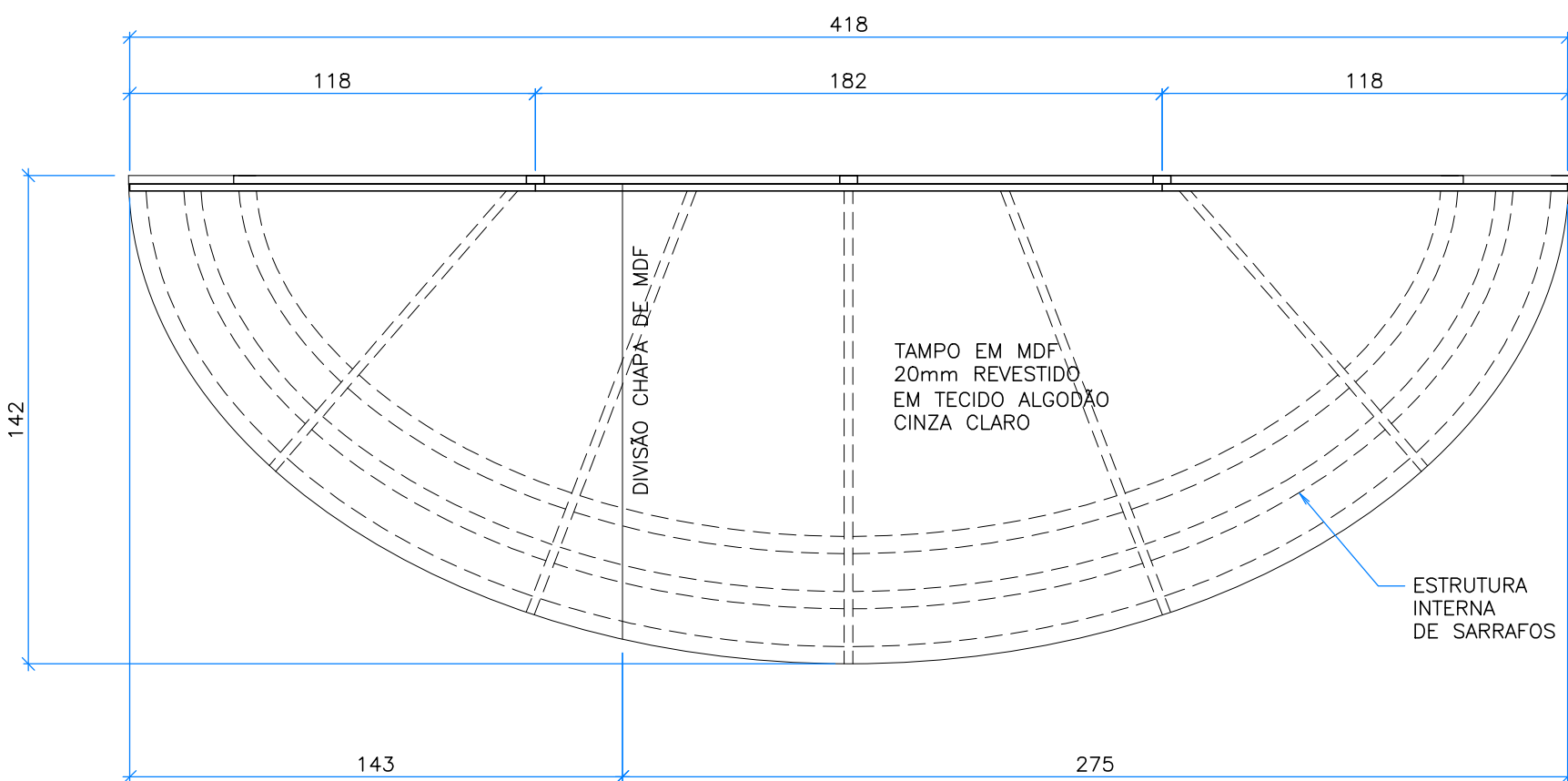


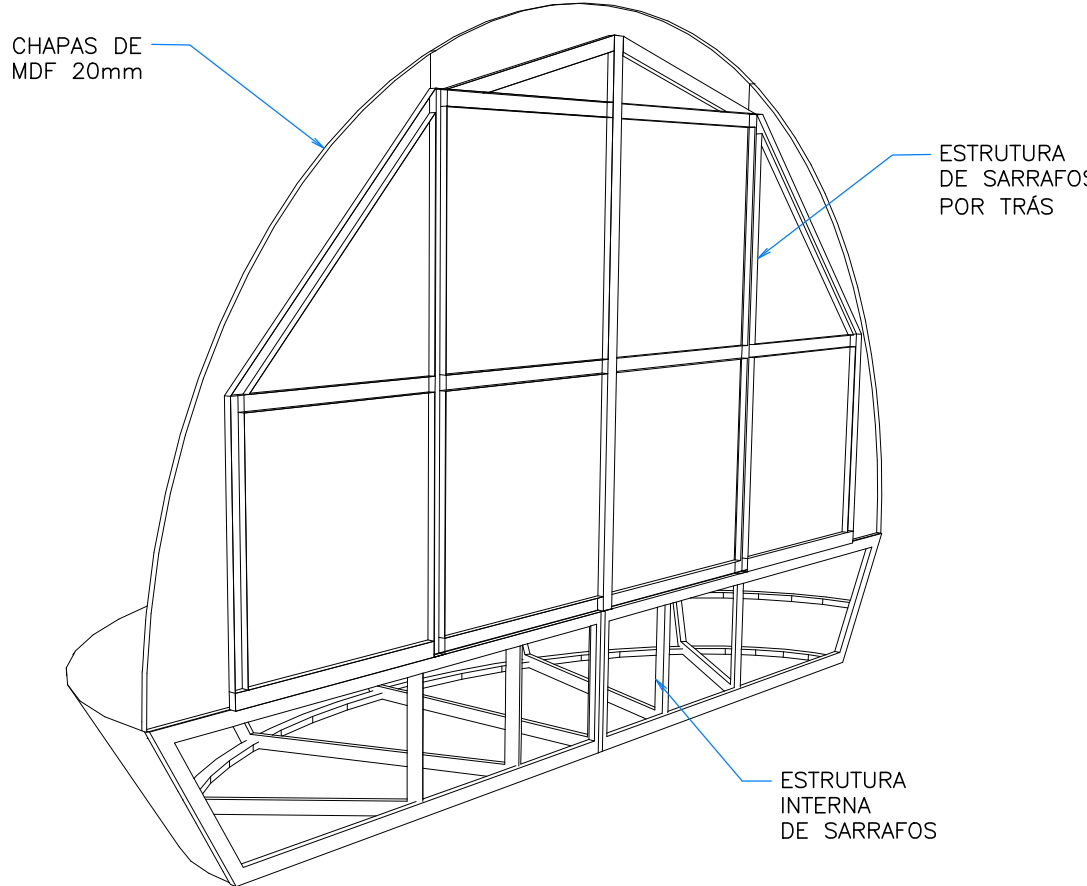
VISTA 1
1:20



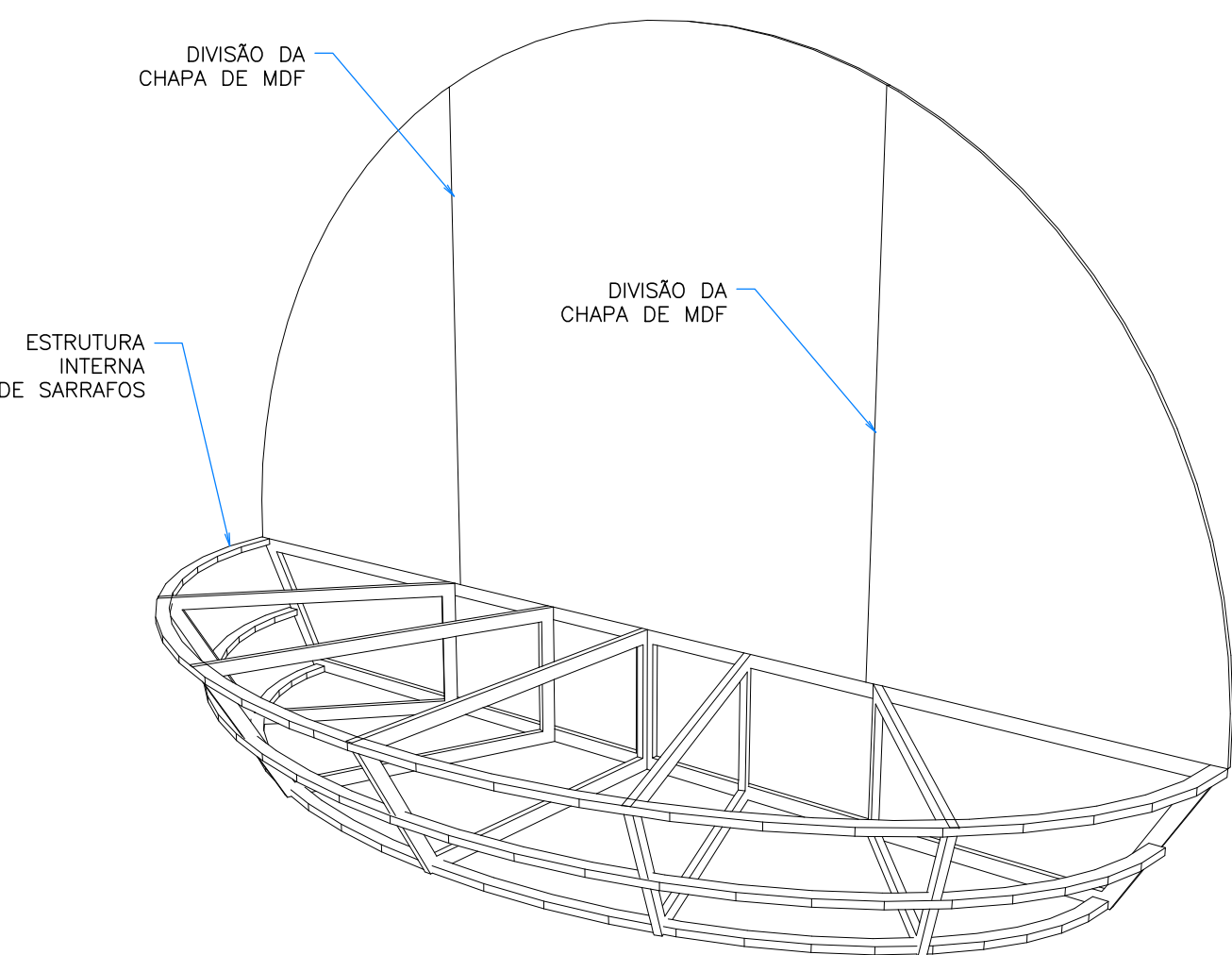
CORTE
1:20



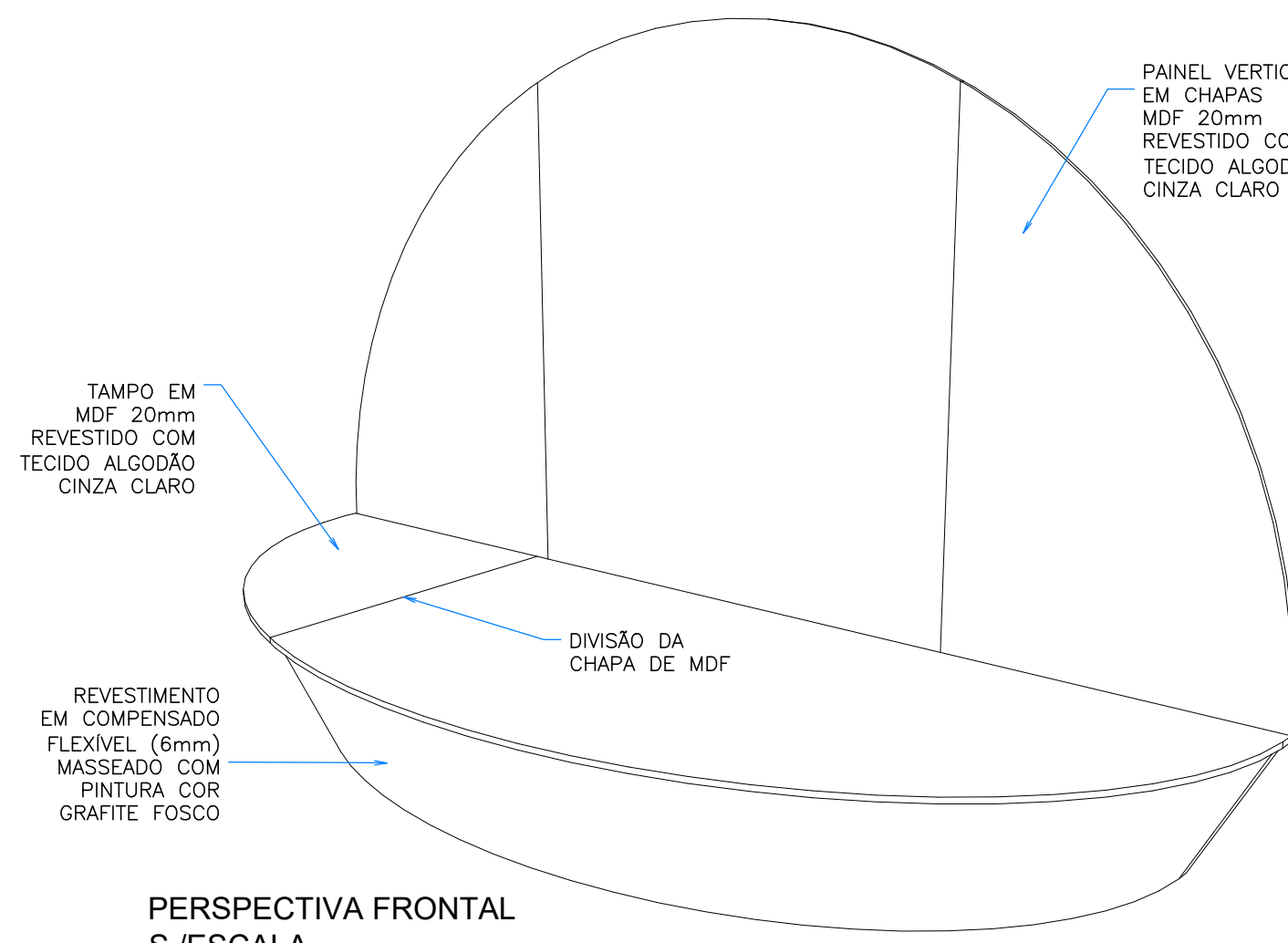
PLANTA
1:20



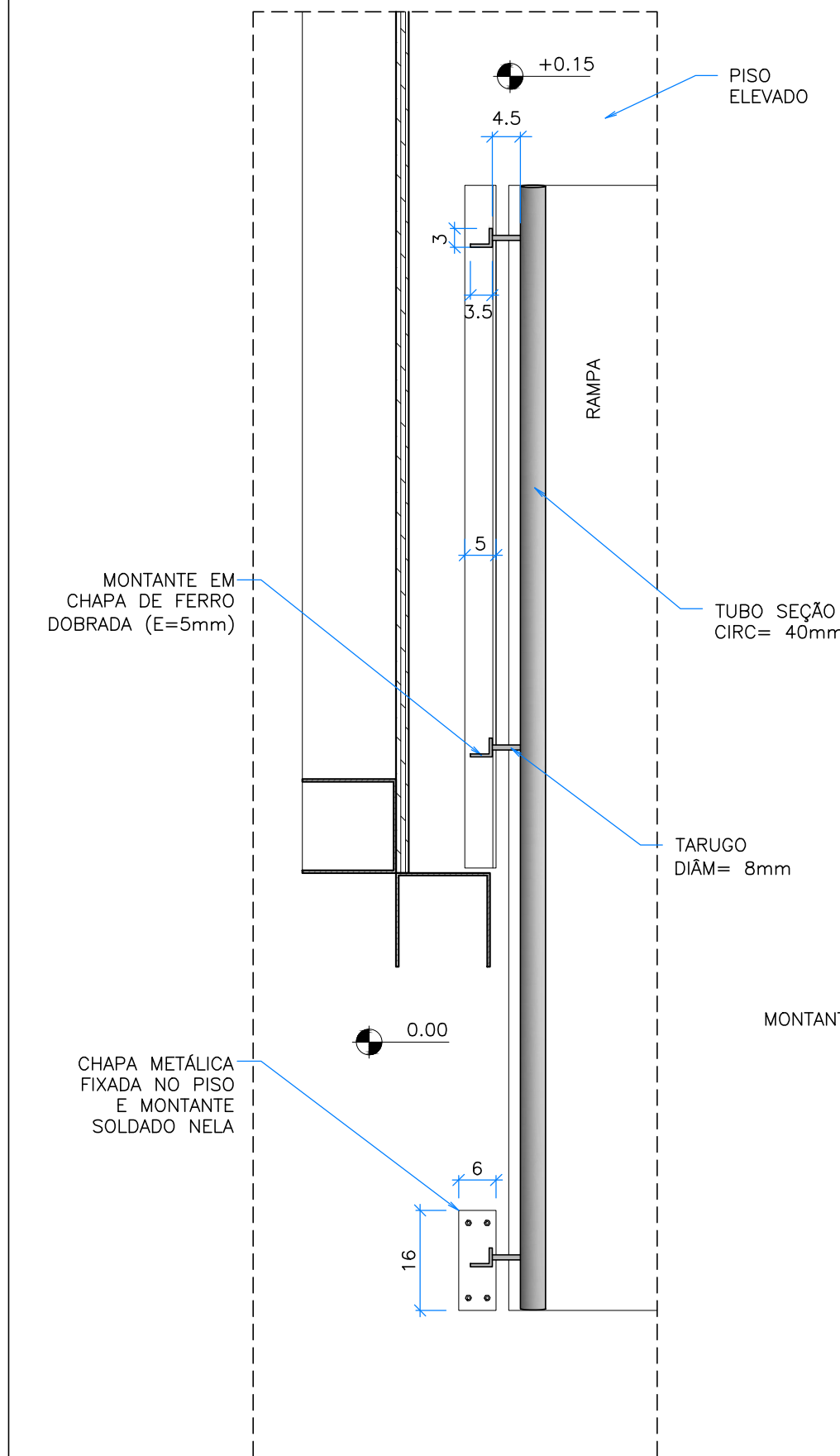
PERSPECTIVA POSTERIOR
S/ESCALA



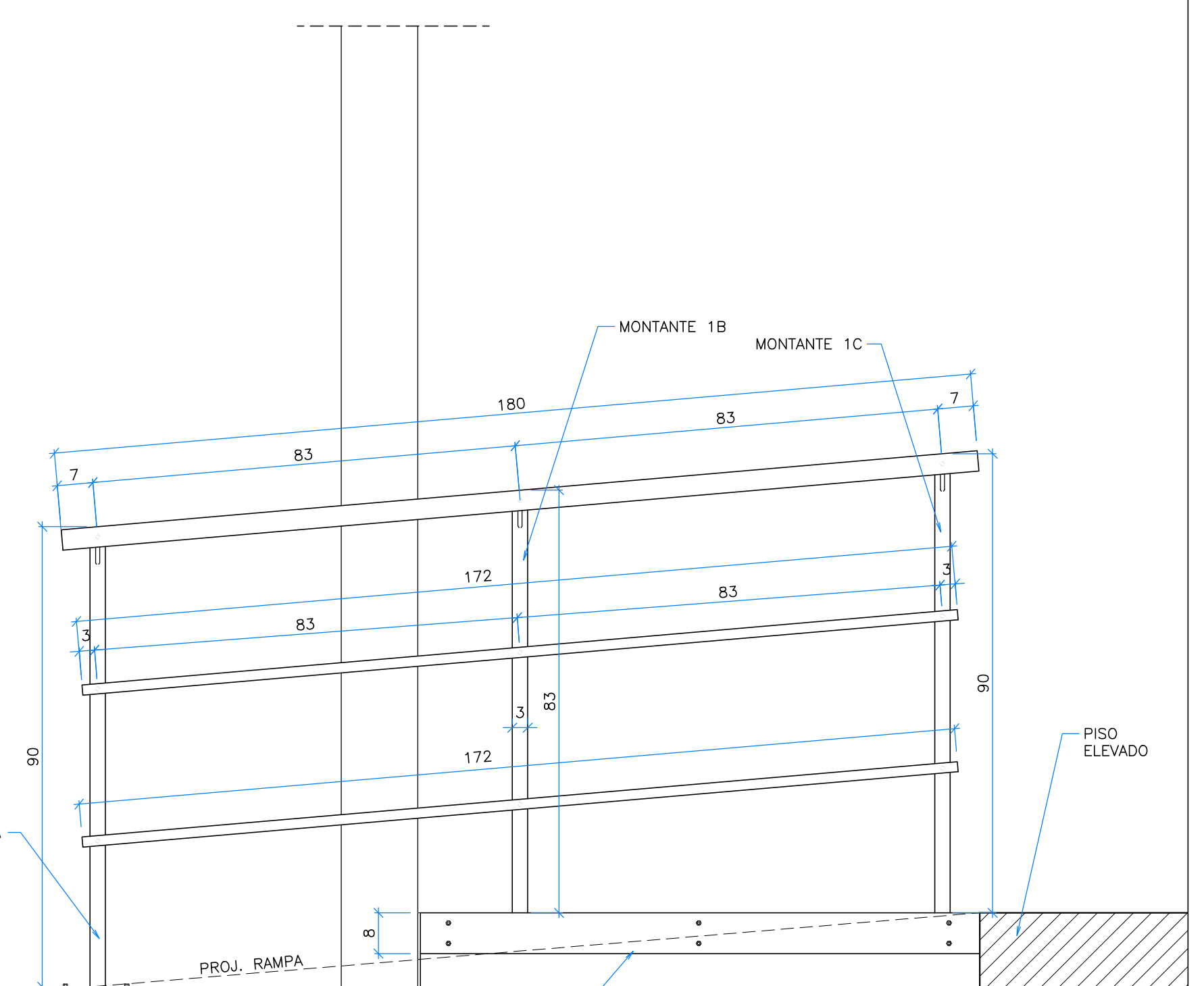
PERSPECTIVA - ESTRUTURA MESA
S/ESCALA



PERSPECTIVA FRONTAL
S/ESCALA

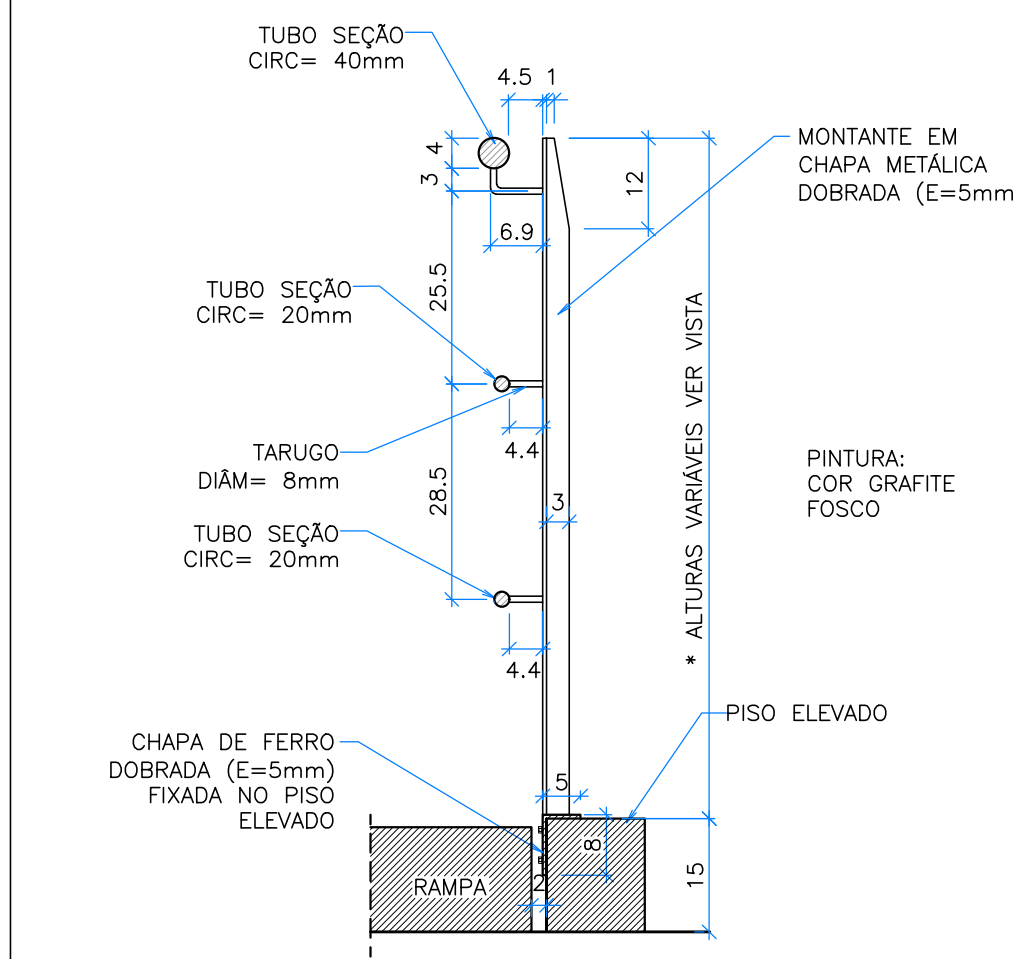


VISTA SUPERIOR
1:10

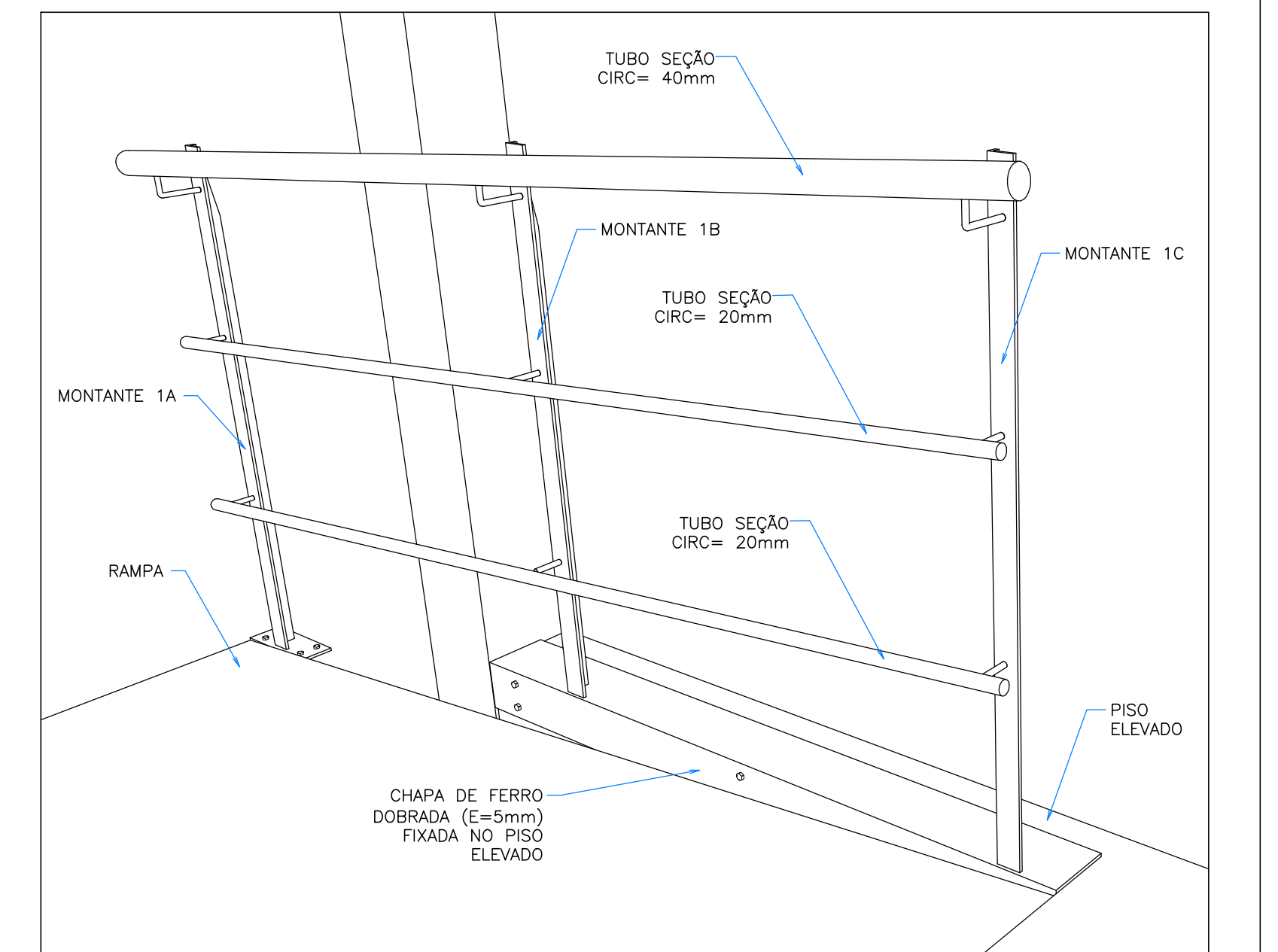


VISTA FRONTAL
1:10

PINTURA:
ESMALTE SINTÉTICO
GRAFITE FOSCO



CORTE PADRÃO
1:10



PERSPECTIVA
S/ESCALA

DETALHES - CORRIMÃO TIPO 1

QUANTIDADE= 04 (sendo 02 espelhados)

DETALHES - MESA E PAINEL DE PROJEÇÃO

NELD - MUSEU DA IMIGRAÇÃO
EQUIPE
ETAPA DO PROJETO
ASSUNTO

FELIPE TASSARA, IARA ITO E
TANIA MARA MENEZES
PROJETO EXECUTIVO - REV.0
MÓDULO 1 - DETALHES

T+T PROJETOS +55 11 3644 3109

26 11 2024
AT
ESC. IND.

05